



**Visit Baton Rouge**  
BATON ROUGE AREA CONVENTION & VISITORS BUREAU

**ACCOMMODATIONS**

- 1 Belle of Baton Rouge Casino & Hotel (F-2)
- 2 Hilton Baton Rouge Capitol Center (D-2)
- 3 Hotel Indigo (D-2)

**ATTRACTIONS & LANDMARKS**

- 1 Belle of Baton Rouge Casino (F-1)
- 2 Hollywood Casino Baton Rouge (A-1)
- 3 Louisiana Art & Science Museum / Irene W. Pennington Planetarium (D-1)
- 4 Louisiana Governor's Mansion (A-4)
- 5 Louisiana State Capitol – Visitor Information Center (A-2)
- 6 Louisiana State Library (B-2)
- 7 Louisiana State Museum (B-3)
- 8 Odell S. Williams Now & Then African-American Museum (G-3)
- 9 Old Arsenal Museum (A-3)
- 10 Old Governor's Mansion and Museum (E-3)
- 11 Old State Capitol – LA Center for Political & Governmental History (E-2)
- 12 Pentagon Barracks (B-2)
- 13 Riverfront - Red Stick Plaza / Public Dock (E-1)
- 14 Shaw Center for the Arts / LSU Museum of Art (D-2)
- 15 USS Kidd DD-661 Louisiana Veterans Memorial and Museum (E-1)

**INFORMATION**

- 1 Baton Rouge Area Convention & Visitors Bureau (D-2)
- 2 Capitol Park Welcome Center (B-2)

**PLACES OF WORSHIP**

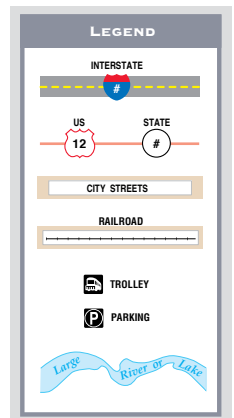
- 1 First Baptist Church (D-3)
- 2 First Presbyterian Church (D-3)
- 3 First United Methodist Church (E-4)
- 4 Mt. Zion First Baptist (E-4)
- 5 New Saint Luke Baptist (G-3)
- 6 St. Agnes Catholic (F-4)
- 7 St. James Episcopal Church (D-3)
- 8 St. Joseph Cathedral (C-3)
- 9 Wesley United Methodist (F-3)

**SHOPPING**

- 1 Main Street Market (C-3)

**THEATER/GALLERY**

- 1 Baton Rouge River Center and Performing Arts Theater (E-2)





6401 Bluebonnet Blvd.  
(Mall Of Louisiana)

327 North Blvd. (Downtown)

5000 & 7777 Hennessy Blvd.  
(Our Lady of the Lake Hospital)

10330 Airline Hwy.

17100 Airline Hwy.  
(Prairieville)

9757 Perkins Rd.  
(Now with Drive Thru Service)

4161 Perkins Rd.

6971 Siegen Ln.

3930 Burbank Dr.

7960 W. Jefferson Hwy.

13759 Coursey Blvd.

**FREE WI-FI**



## Visit South Louisiana's Favorite Coffeehouse.\*

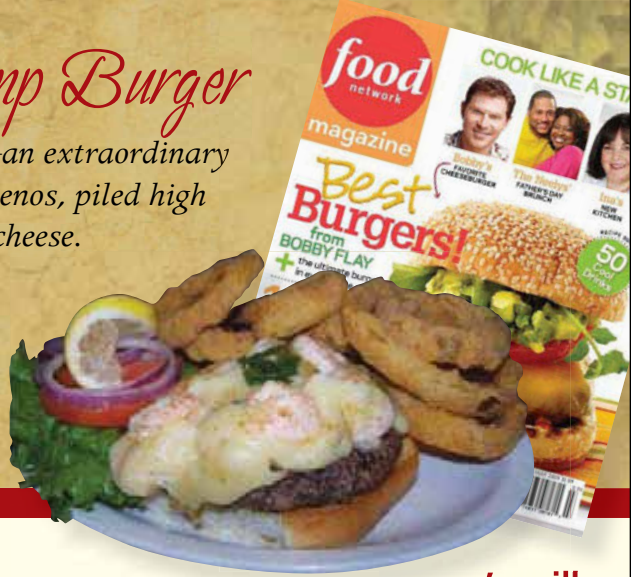
\*2010: Voted Favorite Coffeehouse in Baton Rouge by  
225 Magazine and Baton Rouge Parents Magazine.  
© 2011 Community Coffee Company

## THE HOME OF "LOUISIANA'S BEST BURGER" Named by the Food Network Magazine (2009)

### *The Cajun Shrimp Burger*

**ONLY AT MASON'S GRILL**—an extraordinary  
burger stuffed with diced jalapenos, piled high  
with sautéed shrimp and jack cheese.

Join us for lunch or dinner Monday  
through Saturday or on the weekend  
for brunch from 9 am – 3 pm.



**mason's grill**

view **FULL MENU** online  
[www.masonsgrill.com](http://www.masonsgrill.com)

13556 Jefferson Hwy. • Baton Rouge, LA 70817  
225.756.8815

## AREA GUIDE

4,500+ work permanent collection and rotating exhibitions are highlighted in 14 galleries. Visit us on Free First Sundays and bring the kids on Second Saturdays for a fun free day of art programs. Check the full calendar of exhibitions and events at [www.lsumoa.com](http://www.lsumoa.com). MC, V, AE; HC

### Manship Theatre

Shaw Center for the Arts, 100 Lafayette St., (225) 344-0334, [www.manshiptheatre.org](http://www.manshiptheatre.org). Baton Rouge's performance venue. MC, V, AE, D; HC

### Pastime Restaurant & Lounge

252 South Blvd., (225) 343-5490, [www.pastimerestaurant.com](http://www.pastimerestaurant.com). Mon.-Sat., 10 a.m.-11 p.m.; Fri., 10 a.m.-midnight. A downtown sports bar and award-winning restaurant serving Baton Rouge for more than 65 years. Four times awarded one of the Top 100 Independent Restaurants in the U.S. A local historical landmark and a great place to meet the locals and enjoy great food, a warm atmosphere and local traditions. MC, V, D; HC

### River Road Coffees

5712 Tennyson Drive, (225) 751-2633, [www.riverroadcoffees.com](http://www.riverroadcoffees.com). Local coffee roaster specializing in coffee service. MC, V, AE

### Shaw Center for the Arts

100 Lafayette St., (225) 346-5001, [www.shawcenter.org](http://www.shawcenter.org). Mon., 9 a.m.-4 p.m.; Tues.-Sat., 9 a.m.-11 p.m.; Sun., 11 a.m.-5 p.m. Contemporary visual and performing arts facility features LSU Museum of Art, Manship Theatre, LSU School of Art Glassell Gallery, LSU Museum Store and Arts Council's Community School for the Arts. Restaurant options include Tsunami, Capital City Grill, Stroubes Chophouse and PJ's Coffee. HC

### The Shop at the Top & Louisiana State Museum Gift Shop

Louisiana State Capitol, 27th Floor, (225) 342-5914 and Louisiana State Museum, 1st Floor, (225) 219-0953. Located on the 27th floor of the State Capitol, The Shop at the Top provides a spectacular panoramic view of the Mississippi River and the Capital Cityscape. Free admission, open 7 days a week. Additional gift shop location at the bottom of the LSM on Fourth Street. Offering great Louisiana and Baton Rouge souvenirs, and the perfect place to look for unique Louisiana gifts.

### Smoothie King

301 Main St., Ste. 170, (225) 336-6560, [www.smoothieking.com](http://www.smoothieking.com). Mon.-Fri., 7 a.m.-5 p.m.; closed Sat. and Sun. Smoothie King is the premier smoothie bar and nutritional lifestyle center in the industry. Each "lifestyle center" also offers healthy retail product solutions in sport beverages, energy bars, healthy snacks, vitamin supplements, herbs, minerals and sports nutrition products. MC, V, AE, D; HC


### STUN Design and Advertising

442 Government St., (225) 381-7266, [stundesign.net](http://stundesign.net). Mon.-Fri., 8:30 a.m.-5 p.m. We offer marketing and branding services along with graphic design, Web design and interactive Flash design. We take advantage of great design to help your organization reach its goals.

### USS KIDD & Veterans Memorial

305 S. River Road, (225) 342-1942, [www.usskidd.com](http://www.usskidd.com). 9 a.m.-5 p.m. daily. Restored WWII destroyer. Veterans museum features ship models, artifacts, Louisiana Memorial Plaza, Hall of Honor, aircraft, exhibits and gift shop. V, MC, D, AE; HC

the TOP  
of the WORLD



*has been relocated.*

AND THE VIEW FROM UP HERE IS DELICIOUS.

downtown baton rouge atop the shaw center | lafayette  
find us on facebook | follow us on twitter @tsunamibr  
tu-th 11am-10pm; f-s 11am-11pm  
225-346-5100 | [servingsushi.com](http://servingsushi.com)

Minutes from Downtown Baton Rouge,  
River Center, and LSU!

Free hot breakfast • Free wired & wireless highspeed  
Cloud 9 bedding • 32" Flatscreen  
Micro Fridge in all rooms • Fitness Center • Pool

Port Allen • 2755 Commercial Drive  
Just off I-10 Lobdell Exit 151  
225.389.6655