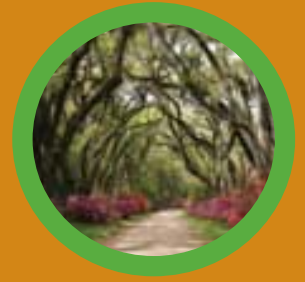


Film Baton Rouge



Visit Baton Rouge
Baton Rouge Area Convention and Visitors Bureau



B A T O N R O U G E A R E A C O N V E N T I O N & V I S I T O R S B U R E A U

1 (800) LA•ROUGE
www.visitbatonrouge.com

FILM
BATON ROUGE

FILM

Overview.....	75
Discount Programs/ Incentives.....	76
Assistance/Permits	78
Union/Resources.....	79
Baton Rouge Film Festivals.....	80

Lights, Camera, Baton Rouge!

Our film commission and advisory board welcome you to be a part of the dynamic entertainment industry, comprised of film and television production, post production, animation and video game development. The desire to showcase our talent, locations, incentives and the myriad of production facilities we offer places us in a unique position in the nation and the world. We extend our hands to you as a partner. All it takes is you doing the same. Together, we can **Film Baton Rouge**.



Melvin L. "Kip" Holden
Mayor-President
of East Baton Rouge Parish

Visit www.filmbatonrouge.com for the most up-to-date information on how we can help to streamline all of your production needs in the Baton Rouge region.



www.VisitBatonRouge.com

BATON ROUGE AREA CONVENTION & VISITORS BUREAU

REGIONAL OVERVIEW

The Baton Rouge region covers nine (9) Parishes (counties);

- Ascension Parish
- East Baton Rouge Parish
- East Feliciana Parish
- Iberville Parish
- Livingston Parish
- Pointe Coupee Parish
- St. Helena Parish
- West Baton Rouge Parish
- West Feliciana Parish.

COMMISSION OVERVIEW

The role of the **BATON ROUGE FILM COMMISSION** is to provide:

- Location Scouting Assistance and Script Analysis
- Assistance in Securing Competitive Rates on Housing and Accommodations through its partnership with the Convention and Visitors Bureau
- Free Permits
- Assistance in Finding Production Office Space
- Liaison Services between production companies, the community and local government throughout the entire production schedule



State Capitol Building, Baton Rouge

**ENTERTAINMENT
INDUSTRY PREFERRED
VENDOR DISCOUNT
PROGRAM**

The Baton Rouge Film Commission and the Baton Rouge Area Convention and Visitors Bureau have partnered to launch to Entertainment Industry Vendor Discount Program. This program invites the participation of all local businesses.

Alligator Bayou,
Ascension

All qualified film and television productions who have registered with the Baton Rouge Film Commission will receive Entertainment Industry Vendor Discount cards. These professionals will receive at least 15% in savings from local businesses who take part in the program.

Qualifying productions and local businesses interested in participating can log onto www.filmbatonrouge.com and click on "Vendor Discounts" in order to download the appropriate forms and instructions.



INCENTIVES

What is the benefit called?

Motion Picture Investor Tax Credit

How much is the benefit?

A 25% Investor Tax Credit is granted based upon the total in-state expenditures of a motion picture production. An additional 10% labor tax credit is given for the hiring of Louisiana residents. The tax credits are fully transferable. Louisiana also offers a 15% infrastructure tax credit for the building/establishment of state-of-the-art facilities.

If the benefit is based on "location spend" what exactly does "location spend" mean?

Location spend applies to the total expenditures made (including pre-production, production and post-production) to an entity based in Louisiana and licensed to do business here. These in-state expenditures must be run through an LLC based in Louisiana which runs the expenditures through a Louisiana bank account.

Does local spend include the following?

Foreigners working in Louisiana? The 25% credit includes the entire spend on payroll regardless of where the cast or crew are domiciled. To earn the additional 10% on local hire, that labor must be a resident of Louisiana (which is defined as a person with permanent residence in Louisiana for at least six months of the year).

Finance Fees?

Yes, as long as it is purchased from a Louisiana company.

Bond Fees?

Yes, as long as it is purchased from a Louisiana company.

Per diems?

Yes.



Downtown,
Baton Rouge

Eligibility who can access the relief?

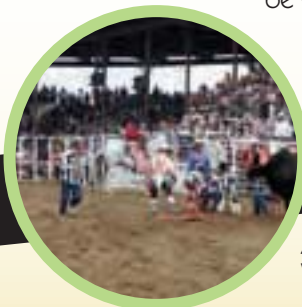
A motion picture project includes a feature-length film, video, television series (and MOWs), or commercial made in Louisiana (only television coverage of news & athletic events are excluded). The motion picture project must spend at least \$300,000 to qualify for the tax credits.

How does the mechanism work and what is the process?

A production must apply to the program to become a state certified production by filling out an application available online at www.lafilm.org and submitting the application with fee to the Governors Office of Film & Television Development (GOFTD). The tax credit is earned at the time the expenditures are made. However, the credits cannot be applied or transferred until the expenditures are certified by the GOFTD. Before GOFTD certifies expenditures; the production must submit a cost report of production expenditures audited and certified by an independent certified public accountant licensed by the state of Louisiana.

How certain is it? (ie: are the criteria objective or subjective?)

The criteria for earning the tax credits are totally dependent upon the production, making the expenditures in the state of Louisiana, which will be verified by the audit.



Angola,
West Feliciana

What percentage of the film has to be shot in this country/state and what percentage of the spend needs to be spent here?

A production must spend at least \$300,000 in Louisiana to qualify.

Which countries/states does this country currently have coproduction treaties with?

The USA does not have any coproduction treaties.

Are there any limitations?

The production expenditures must be spent in Louisiana to qualify.

Where do the funds come from?

This is a tax credit program (not a refund or rebate) in which the production earns tax credits that are fully transferable.

Who decides?

The Governor's Office of Film & Television Development determines if a project qualifies for the program based on the application and in accordance with Act 456.

What are the audit requirements?

The audit requirements can be found at www.lafilm.org

If a coproduction is required, what are the conditions for obtaining coproduction status, the coproduction guidelines and what are the tax consequences?

A coproduction is not required.

When will the money be received?

The credits are earned upon certification and the production determines whether to utilize the credits or transfer them.

Is there a "cap" on the amount available, both on a film by film basis and in any fiscal year?

There is NO cap.

What is the current sales tax rate (%) in this country/state?

The sales tax varies among municipalities, the state imposed sales tax is at a rate of 4%.

Is sales tax recoverable and if so on what?

It is not recoverable.

If sales tax is recoverable, when can the production company expect to get the sales tax back?

It is not recoverable.

To what extent will cast and crew traveling to this country/state be taxed there? (ie: What is the withholding tax regime like, national insurance contributions, social security charges etc.)

Out of state residents must file a nonresident income tax return in accordance with state and federal law. For more information, please visit <http://www.irs.gov/>

Are there any other taxes or costs that producers should know about? (ie: corporation tax on the production company etc.)

The production should consult with their Louisiana counsel or accountant to determine if there are any applicable taxes or associated costs.

Are there any additional incentives or other advantages that producers should know about when considering bringing a production to this country/state? (ie: free or reduced location fees, use of police etc.)

Louisiana is a very film friendly location to shoot



Witter Property, Baton Rouge

"What films have recently been shot in the Baton Rouge area?"

Yellow Handkerchief, The Loss of the Teardrop Diamond, Autopsy, Mama I Want to Sing!, A Good Man is Hard to Find, War Birds, The Reaping, Glory Road, All the Kings Men, Dukes of Hazzard.

For more information contact:

Louisiana Office of Entertainment Industry Development

1051 North Third Street, Suite 173
Baton Rouge, Louisiana 70802

TEL: 225/342-5403

HOTLINE: 225/342-3456 (FILM)

EMAIL: led-entertainment@la.gov

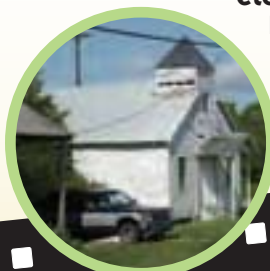
WEB: www.lafilm.org



River Road, Baton Rouge



Frostop Diner, Baton Rouge



River Road, Baton Rouge

SCOUTING ASSISTANCE

The Baton Rouge Film Commission houses a digital location library system, powered by Reel Scout™, which allows us to customize a location package specific to your needs. Continuously updated, this location library and proven technology enables us to respond faster without the transmission of large image files. Log onto www.filmbatonrouge.com and click on “search locations” in order to access our **Reel Scout database**. This system is constantly being updated with images from the Baton Rouge area.

We also encourage you to peruse this entire Baton Rouge Area Convention and Visitors Bureau Professional Planner as it is an excellent source of prominent Baton Rouge location ideas and images.

When you decide that Baton Rouge is a viable location possibility for your production, the Baton Rouge Film Commission will assist in the arrangement of an extensive preliminary scouting tour for your team.



Alamo Plaza, Baton Rouge

HOTEL & ACCOMMODATION ASSISTANCE

The process of securing housing is easier in Baton Rouge because we do all the work for you. The Baton Rouge Area Convention and Visitors Bureau will distribute your projected production dates and room nights to local properties. We request availability, arrange site inspections and request entertainment rates that allow for competitive bidding.

The Baton Rouge Film Commission will also work diligently to help you find the right production office space to suit the size and scope of your project.

PERMITTING

YOU NEED A PERMIT IF:

You are producing a feature/independent film/video/digital-related project that affects city/parish/state property, equipment or facilities. This includes public property such as sidewalks, highways, and parks.

Your production is taking place on private property and involves production vehicles and or crew vehicles parking on the street, involves the display of firearms, use of gunfire; or involves pyrotechnics.

YOU DO NOT NEED A PERMIT IF:

You are producing a news segment or news feature. Your production is taking place at a production studio. You are using a handheld camera and no other production equipment.

INFORMATION REQUIRED FOR PERMITS:

- Filming location(s)

- Dates, times, and rain dates
- City services requested
- A production activity report to include but not limited to general vehicle list, number of personnel and pertinent information effecting location logistics such as road closures, intermittent traffic control, use of large equipment (cranes/generators/dolly track). Notification of neighbors and surrounding businesses if special effects, night productions or multiple day productions are to take place which could potentially impact them.
- Certificate of Insurance – Mandatory for permitting, the insurance must additionally insure the appropriate city, parishes or State of Louisiana. General Liability is \$1 million. The certificate of insurance must be provided for the permit to be processed and the Baton Rouge Film Commission must be notified



Mississippi River



Beauregard Town, Baton Rouge

immediately by the policy holder if insurance coverage is lowered or dropped.

PERMITTING CHARGES

There are NO processing fees.

TRAFFIC ASSISTANCE

All types of traffic restrictions require enough officer assistance to control and re-direct traffic adequately. This will be determined by the appropriate law enforcement agency and the traffic engineering department. **As a general rule, closures of major roads are favored during off-peak hours of 7:00 p.m. – 7:00 a.m.**

ROAD CLOSURES REQUIRE A MINIMUM 10 DAY NOTICE.

SPECIAL EFFECTS AND EXPLOSIVES

Detailed explanation of the explosion and substances to be used must be submitted. Production must satisfy any and all regulations set forth by the appropriate law enforcement. A certificate of insurance naming the city, parish or State of Louisiana for \$5 million dollars must be obtained and submitted at time of request.

LAW ENFORCEMENT

Determining whether one or two officers is necessary during production depends on the impact of the production. Off-duty police officers can be hired to assist film productions.

BATON ROUGE METROPOLITAN AIRPORT

Strict security guidelines will apply. The Baton Rouge Film Commission will assist in contacting the appropriate person(s).

UNION INFORMATION

Louisiana Act 1976, No. 97 includes the provision that “no person shall be required, as a condition of employment, to become or remain a member of any labor organization, or to pay any dues, fees, assessments, or other charges of any kind to a labor organization.”

For union information please contact **I.A.T.S.E. Local 478**. They are a union of experienced motion picture and television production professionals based in New Orleans covering all of Louisiana and the Gulf South.

LOCAL 478

President:

PHIL LOCICERO

432 North Anthony Street, Suite 305
New Orleans, LA 70119

PH: 504/486-2192

FAX: 504/483-9961

E-MAIL: info@iatse478.org

Business Agent:

MIKE McHUGH

Contact: Same as above

E-MAIL: mmchugh78@bellsouth.net

TEAMSTERS LOCAL 5

Keith Partin

1772 Dallas Drive
Baton Rouge, LA 70806

PH: 225/924-3886

INTERNATIONAL CINEMATOGRAPHERS GUILD Local 600

Southeastern Business

Representative: John Hilsman

7463 Conroy-Windermere Road,
Suite A

Orlando, FL 32835

PH: 407/295-5577

FAX: 407/295-5335

E-MAIL: jhilsman@mindspring.com

CREW AND VENDOR RESOURCES

Please log onto www.filmbatonrouge.com and click on the “**Crew and Vendor Resources**” tab to access our database of local crew and vendors.

SUMMARY

The Baton Rouge Film Commission will do everything in its power to streamline your production needs and will serve as a liaison between production companies, city, and state services. The Film Commission will make arrangements with the appropriate law enforcement agencies for road closures, crowd control, public buildings, supervision of pyrotechnic effects and any other city, parish or state service.



Alma,
Baton Rouge



Donaldsonville



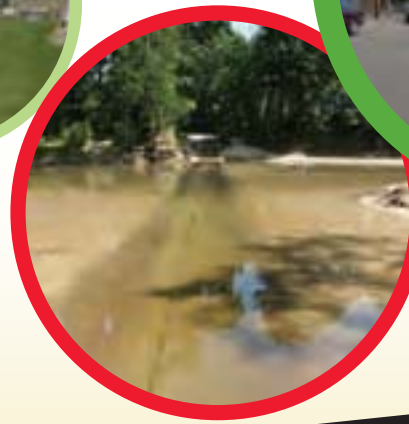
Plaquemine



Donaldsonville



Plaquemine



Cat Island,
West Feliciana

BATON ROUGE FILM FESTIVALS

Baton Rouge Jewish Film Festival

The Jewish Federation of Greater Baton Rouge and Jewish Cinema South present the Baton Rouge Jewish Film Festival.

Paula and Harvey Hoffman, Co-chairs

PH: 225/927-7904
harveybrla@cox.net
www.brjff.com

Boys and Girls Club Youth Film Festival

The Boys and Girls Club Youth Film Festival (BGCYFF) was created to showcase films by young filmmakers (21 and under) from across the country. It also wants to promote filmmaking to all youth especially youth who traditionally do not have the resources to explore filmmaking.



Highway 61

L'Applause, The Louisiana Black Film Festival

The River Road African American Museum's founder Kathe Hambrick has developed the first film series of its kind in Louisiana which honors the rich cultural heritage of blacks in the American theatre and film industry.

Southern Circuit Tour of Independent Filmmakers

Southern Circuit is the nation's only regional tour of independent filmmakers, providing communities with an interactive way of experiencing independent film. The tour takes the audience away from their televisions, DVD players, and computers to connect them with independent filmmakers and encourage them to talk with one another about the films and their meanings. Southern Circuit transforms watching independent films from a solitary experience into a communal one.

www.myspace.com/southerncircuit

Contact: Kathe Hambrick
PHL: 225/474-5553
kathe@africanamericanmuseum.org
www.africanamericanmuseum.org

Contact: Brooke Wood

Boys and Girls Club of Baton Rouge
8281 Goodwood Boulevard,
2nd Floor, Suite H
PH: 225/383-3928
brooke@brclubs.org
www.brclubs.org



Colyell, Livingston

Get Reel @ Your Local Library: 2ND Annual Teen Film Festival

Get Reel @ Your Library offers teens, ages 12 to 18, the opportunity to direct, film, and edit movies, up to 10 minutes in length, and attend the premiere Teen Film Festival, to be held at the Jones Creek Regional Branch Library, 6222 Jones Creek Road. Teens may submit their films to any location of the Library.

Lydia Acosta, Library Director

PH: 225/231-3700
lacosta@ebr.lib.la.us
www.ebr.lib.la.us

LSU Outhouse Film and Video Festival

The Outhouse Film and Video Festival was started in 2000 by the Cinema Club at LSU as a way to showcase student-produced films and to generate a forum for independent film in Baton Rouge. The 1st Cinema Club President Mark Landry said, "Everybody loves movies. We're just trying to give everybody, especially LSU and Baton Rouge residents, a place to go and enjoy film."

www.lsu.edu/student_organizations/cinema/

Q2: The Baton Rouge Gay & Lesbian Film Festival

http://www.myspace.com/qfestival

Redstick International Animation Festival

The festival has its roots firmly planted in the creative side of the animation business and acts to provide animators, directors, students, artists, designers, writers and educators with a forum in which they can share their knowledge and skills and promote the art of animation.

Contact: Stacey Simmons

PH: 225/578-8903
www.redstickfestival.org

Check festival websites for current dates and details.



Tin Lizzie's,
Tickfaw River, Livingston

Location, scouting, photography and information for this Film Baton Rouge guide provided by:

Phillip Seifer, Scout

PH: 225/294-3321
CELL: 985/507-3067
phillipseifert@aol.com